

KE 140



EN: KE 140 series, which is the upper mounting model has been designed in a way to meet the anticipation in the site.

The KE 140 series was developed and structured in line with the recommendation and demands of architectures in the application field, it may be used in larger projects such as shopping malls and hotels. The thickness of the glass may be selected optionally between 12-21.52 millimeters.

FR: La série KE 140, qui est le modèle de montage supérieur, a été conçue de manière à répondre aux besoins du chantier.

La série KE 140 a été développée et structurée conformément aux recommandations et aux exigences des architectures dans le domaine, elle peut être utilisée dans des grands projets tels que les centres commerciaux et les hôtels. L'épaisseur du verre peut être choisie en option entre 12-21,52 millimètres.

DE: Die KE 140-Serie, bei der es sich um das obere Montagemodell handelt, wurde so konzipiert, dass die Erwartungen vor Ort erfüllt werden.

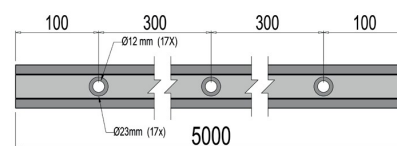
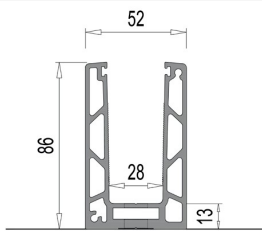
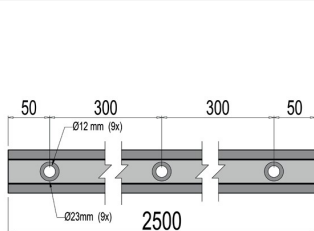
Die KE 140-Serie wurde gemäß den Empfehlungen und Anforderungen von Architekturen im Anwendungsbereich entwickelt und strukturiert und kann in größeren Projekten wie Einkaufszentren und Hotels eingesetzt werden.

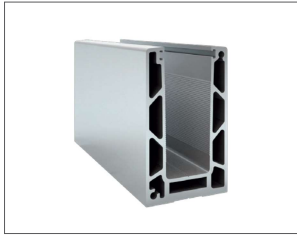


KE 140 CODES

- KE140.250.00
- KE140.500.00

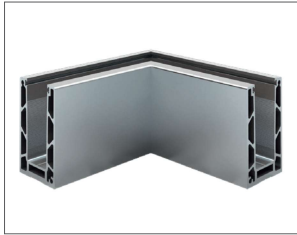
PROFILE DRAWING





GLASS PROFILE KE 140

KE 140	MILL FINISH	MAT ANODISE	BRIGHT ANODISE	STAINLESS STEEL EFFECT	RAL COLOURED
Length	Code	Code	Code	Code	Code
2500 MM	140.250.10	140.250.20	140.250.30	140.250.40	140.250.50
5000 MM	140.500.10	140.500.20	140.500.30	140.500.40	140.500.50



CORNER 90°

KE 140	MILL FINISH	MAT ANODISE	BRIGHT ANODISE	STAINLESS STEEL EFFECT	RAL COLOURED
INSIDE/OUTSIDE	Code	Code	Code	Code	Code
	140.100.10	140.100.20	140.100.30	140.100.40	140.100.50



END CAP

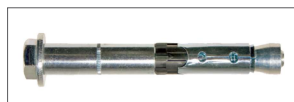
KE 140	MILL FINISH	MAT ANODISE	BRIGHT ANODISE	STAINLESS STEEL EFFECT	RAL COLOURED
LEFT / RIGHT	Code	Code	Code	Code	Code
	140.120.10	140.120.20	140.120.30	140.120.40	140.120.50



FIXING ANCHOR
M10x150

Code

9800.010.00



FIXING ANCHOR
M10x110

Code

9800.015.00



FIXING ANCHOR
M10x110

Code

9800.075.00

9800.110.00

9800.150.00



EXTENSION PIN
M4x50

Code

9850.005.00



Glass Thickness	Colour	5000 MM	PCS
		Code	Code
12 - 13.52 mm	RED	KE.M 5000.012.00	KE.M 0001.012.02
16 - 17.52 mm	BLUE	KE.M 5000.016.00	KE.M 0001.016.02
20 - 21.52 mm	GREEN	KE.M 5000.020.00	KE.M 0001.020.02